
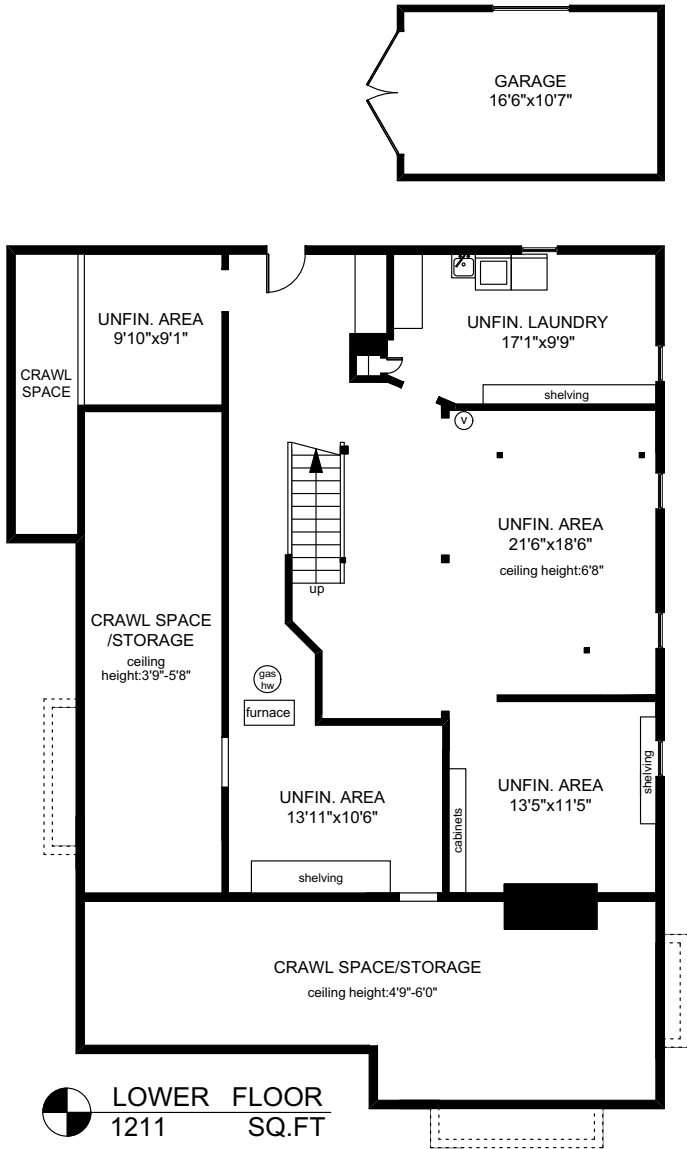
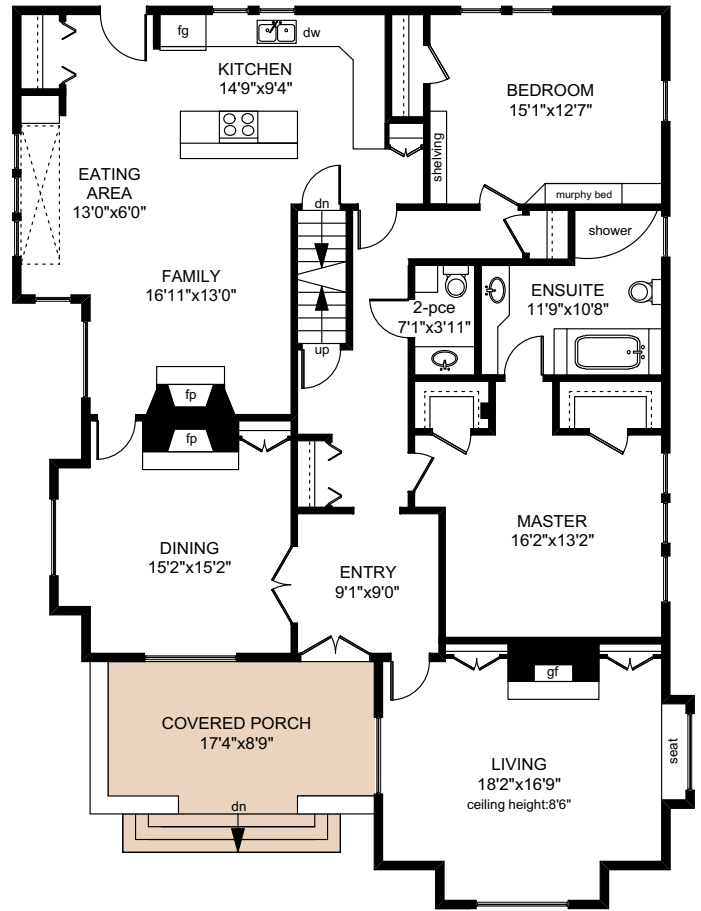




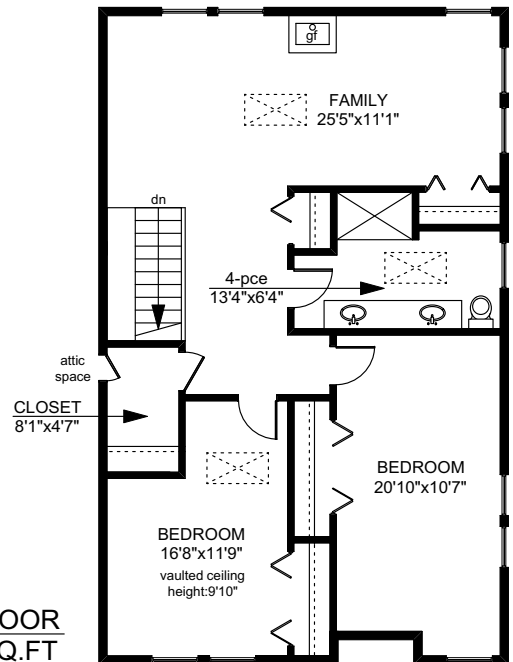
1149 FAITHFUL STREET

 **MAIN FLOOR**
2042 SQ.FT

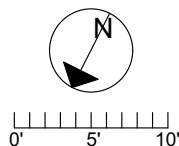


 **LOWER FLOOR**
1211 SQ.FT

 **UPPER FLOOR**
1132 SQ.FT



	FINISHED SQ. FT.	UNFINISHED SQ. FT.	TOTAL SQ. FT.
MAIN	2042	0	2042
UPPER	1132	0	1132
LOWER	0	1211	1211
TOTAL	3174	1211	4385
GARAGE	0	198	198
PORCH	0	161	161



PREPARED FOR THE EXCLUSIVE USE OF
MIKE PEARCE OF THE CONDO GROUP
REAL ESTATE

MEASURED ON: 02/19/19
DRAWING FILE: 15843

Tafmeasure VICTORIA, B.C.
Ph. 883.8894
www.tafmeasure.com